

Kurwongbah State School

Sign Language – Lesson 5

Family

family



Family

Extend index and middle fingers of both hands and place dominant formation on top of non-dominant...

mother



Mum

Fingerspell M quickly, twice

father



Dad

Fingerspell "F" quickly, twice

sister



Sister

Tap side of crooked dominant index finger on bridge of nose, twice.

brother



Brother

Rub fists up and down, twice.

grandmother



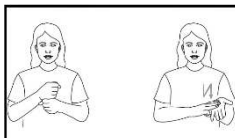
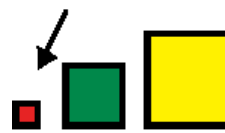
grandfather



big

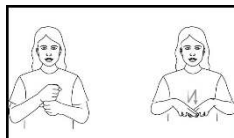


little



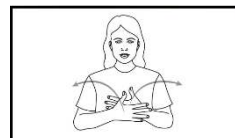
Grandma

Fingerspell "G" then "M "M"



Grandpa

Fingerspell "G" then "F "F"



Big

Place both open hands, palms facing body, fingers spread in front of body, one hand in front of the o...



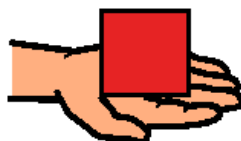
Little

Move open hands close to each other, palms facing. (Natural gesture – mime the action).

I



have



a big



sister



Point to self using extended dominant index finger. (Natural gesture).



Have

Cup dominant hand, fingers spread, palm up. Drop hand while closing into a fist.



Big

Place both open hands, palms facing body, fingers spread in front of body, one hand in front of the o...



Sister

Tap side of crooked dominant index finger on bridge of nose, twice.