

## Early Childhood Early Intervention (ECEI)

If you have a child with **developmental delay** or **disability**, it's important to provide them with support as early as possible. To help you do this the NDIS has worked with a range of early childhood intervention practitioners to develop the ECEI Approach.




The ECEI Approach is designed to support children aged 0-6 years who show developmental delay and children who may have a disability.

Most importantly, the ECEI Approach is designed to help your child get the support they need to participate actively in family and community life.

The Benevolent Society is the National Disability Insurance Scheme (NDIS) Partner in the Community delivering the ECEI Approach in the **Logan City, Redland City, Brisbane City** and **Moreton Bay Regional Council** areas.



### Contact The Benevolent Society about Early Childhood Early Intervention

-  Call 1300 00 ECEI (3234)
-  Email [benevolent.ecei@ndis.gov.au](mailto:benevolent.ecei@ndis.gov.au)
-  Visit [ndis.gov.au/ecei](https://ndis.gov.au/ecei)



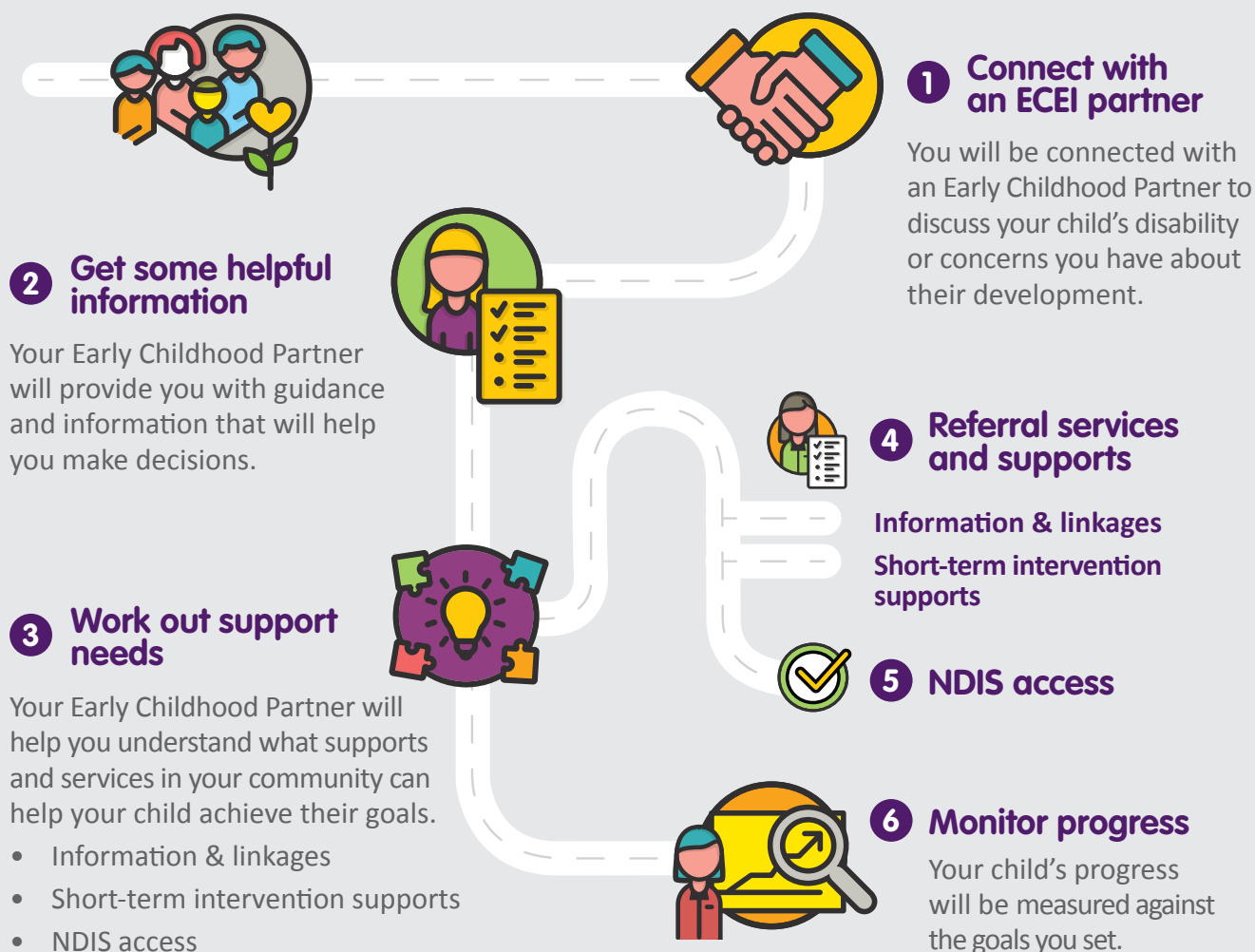
## Early Childhood Early Intervention

## Your local NDIS Early Childhood Partner in the Community

The Benevolent Society is the NDIS Early Childhood Partner in the Community for the **Logan City, Redland City, Brisbane City** and **Moreton Bay Regional Council** areas. We provide parents with the knowledge, skills and support

to enhance their child's development and ability to participate actively in their communities. We can offer a range of supports to children aged 0-6 years with developmental delay or disability.

### Your steps to ECEI support



## The ECEI journey

Every child is different. To get access to the right support for your child, there are different pathways you can take. This might include connecting with community support options, further investigation to get to know your child better, individual or group work to build your child's skills, or assistance to access funded support through the NDIS.

### Does my child need a diagnosis to get NDIS support?

A diagnosis is not required for children aged 0-6 years. If you have concerns that your child has a significant delay, please give us a ring to discuss what might be the best pathway to determine and address your child's support needs.



**If you have a child aged 0-6 years with developmental delay or disability, call The Benevolent Society on 1300 00 ECEI (3234) to see how we can assist.**